

GENERAL NOTES FOR MICROMOBILITY CORRALS

NOTES:

1. ALL MICROMOBILITY CORRALS SHALL BE PERMITTED BY DENVER'S DEPARTMENT OF TRANSPORTATION AND INFRASTRUCTURE.
2. THE FOLLOWING CORRAL TYPES ARE GENERAL REPRESENTATIONS AND WILL LIKELY REQUIRE MODIFICATIONS TO FIT ACTUAL FIELD CONDITIONS.
3. DOTI RESERVES THE RIGHT TO ISSUE VARIANCES TO THESE STANDARDS AS APPROPRIATE.
4. ALL MICROMOBILITY CORRALS MUST MEET DOTI TRANSPORTATION STANDARDS AND DETAILS; TRANSPORTATION DESIGN SIGNAL, SIGN AND MARKING STANDARDS; AND ENCROACHMENT RULES AND REGULATIONS GENERAL PLACEMENT AND HEIGHT CRITERIA.

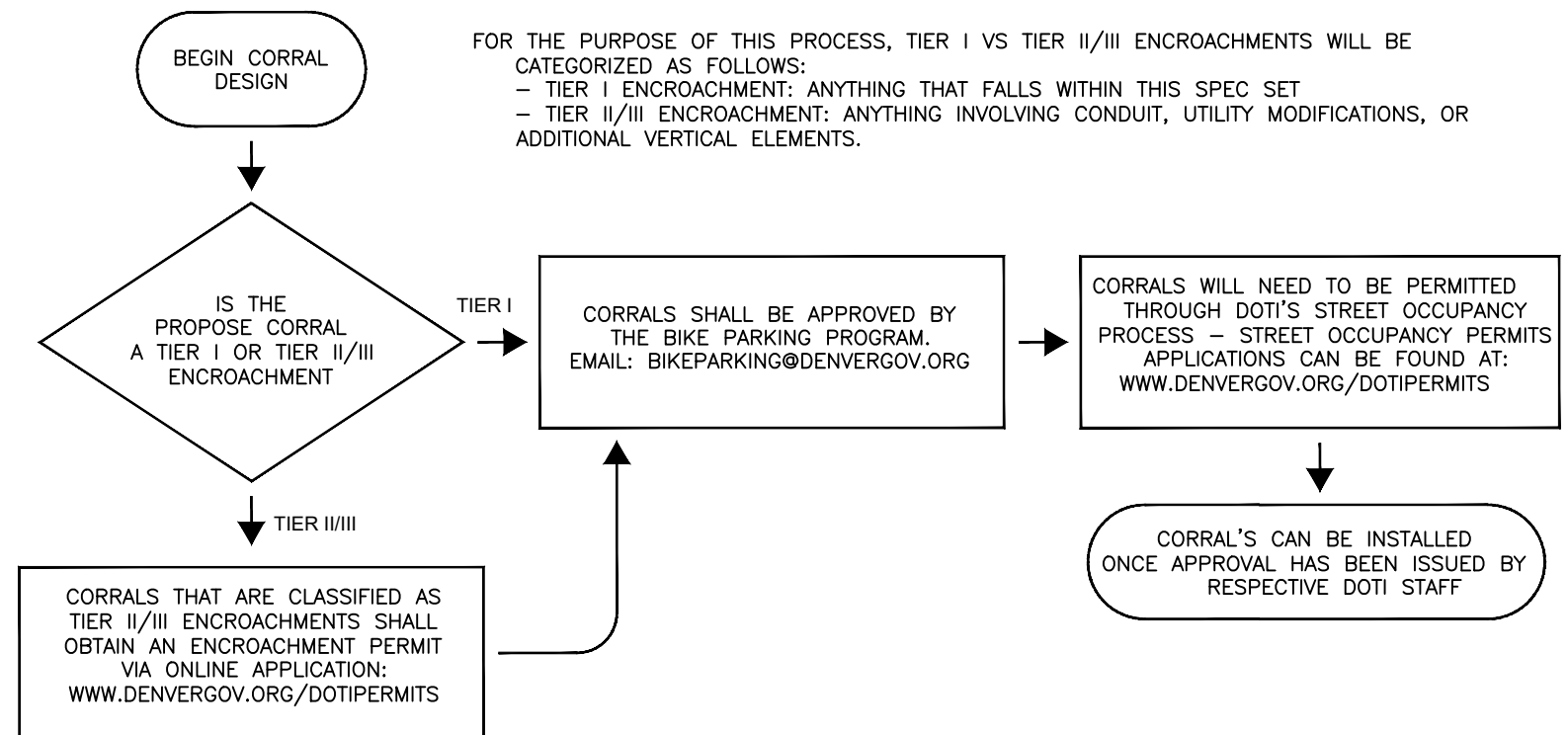
LOCATION SPECIFIC GUIDELINES:

1. MICROMOBILITY CORRALS ARE ALLOWED ON THE FOLLOWING STREET TYPES:
 - 1.1. CENTRAL BUSINESS DISTRICT DOWNTOWN STREETS
 - 1.2. COLLECTOR STREETS THAT ARE DESIGNATED BIKEWAYS
 - 1.3. LOCAL STREETS
 - 1.4. COLLECTOR AND LOCAL STREETS WITHIN BUSINESS IMPROVEMENT DISTRICTS
2. THE AREA BETWEEN THE ROW LINE AND THE FLOW LINE IS THE "STREETSCAPE" AND THE CLEAR SIDEWALK PAR COULD BE A PORTION OR ALL OF THIS AREA. SEE 13.2 IN DOTI'S TRANSPORTATION STANDARDS.
3. CORRALS WILL BE ALLOWED BELOW THE CURB WHEN THE STREETSCAPE IS LESS THAN 10 FEET WIDE OR WHEN THE INSTALLATION OF THE CORRAL WOULD OBSTRUCT PEDESTRIAN TRAVEL. THE STREETSCAPE WIDTH IS MEASURED FROM THE FACE OF CURB/FLOW LINE TO THE ADJACENT FACE OF BUILDING/PROPERTY LINE. CORRALS CAN BE PROPOSED BELOW THE CURB WHEN STREETSCAPE IS MORE THAN 10 FEET WIDE.
4. WHEN CORRALS ARE PLACED BELOW THE CURB, THE CORRAL SHALL NOT BE WIDER THAN THE EXISTING PARKING LANE AND MAINTAIN A MINIMUM TRAVEL LANE WIDTH OF 10 FEET.
5. THE MINIMUM WIDTH OF THE ADJACENT TRAVEL LANE SHALL BE 11 FEET IF IT IS ON A BUS ROUTE.
6. IF NO CENTERLINE IS PRESENT, THE WIDTH OF A CORRAL MAY NOT EXTEND BEYOND 8 FEET AS MEASURED FROM THE FLOWLINE OF THE ADJACENT CURB
7. WHEN CORRALS ARE INSTALLED ABOVE THE CURB, THE CLEAR SIDEWALK PEDESTRIAN ACCESS ROUTE (PAR) WIDTHS SHALL BE AT LEAST 5'. IT IS PREFERRED FOR CORRALS TO BE PLACED WITHIN THE AMENITY ZONE BETWEEN THE PAR AND THE BACK OF CURB WHERE POSSIBLE TO PRESERVE THE EXISTING WIDTH OF THE PAR.
8. WHEN CORRALS ARE INSTALLED ALONG CENTRAL BUSINESS DISTRICT DOWNTOWN STREETS WHERE ESTABLISHED PAR'S ARE WIDER THAN 5 FEET, THE EXISTING PAR WIDTH MUST BE MAINTAINED. IN THESE SCENARIOS, CORRALS SHOULD BE PLACED WITHIN THE ADJACENT AMENITY ZONE. SEE SHEET 5 FOR AN EXAMPLE
9. PAR WIDTH IS REQUIRED TO BE 8 FEET WHERE THE STREETSCAPE WIDTH IS 21 FEET OR GREATER WHEN ADJACENT TO COMMERCIAL PROPERTIES (SEE TRANSPORTATION STANDARD DETAIL 13.2)
10. VEHICLE PATHS / PEDESTRIAN ACCESS (CURB CUT, DRIVEWAY, INTERSECTION, ALLEYWAY, CURB RAMP)
 - 10.1. MICROMOBILITY CORRALS SHALL NOT OBSTRUCT EXISTING VEHICULAR, BICYCLE, OR PEDESTRIAN MOVEMENTS WITHIN PUBLIC STREETS. THIS INCLUDES TURNING MOVEMENTS, PEDESTRIAN CROSSINGS, ETC.
 - 10.2. MICROMOBILITY CORRALS SHALL NOT CONFLICT WITH CURB LANE USES INCLUDING LOADING ZONES, CAR SHARE PARKING, VALET PARKING, ADA PARKING, OTHER PERMITTED USES.

MINIMUM CLEARANCE NOTES:

1. FIRE HYDRANT CLEARANCE: 10 FEET FROM EXISTING FIRE HYDRANT
2. CORRALS ARE NOT PERMITTED ADJACENT TO RTD BUS STOPS(MEASURED FROM THE RTD SIGN FLAG) AND MUST BE PLACED OUTSIDE OF FOLLOWING CLEARANCE BELOW THE CURB:
 - 2.1. 20 FEET AHEAD OF SIGN
 - 2.2. 45 FEET BEHIND SIGN, OR 65 FEET BEHIND SIGN WHERE ARTICULATED BUSES ARE USED.
 - 2.3. ALL CORRALS MUST MEET CLEARANCE REQUIREMENTS AS DEFINED IN RTD'S BUS INFRASTRUCTURE STANDARD DRAWINGS.
3. ROW INFRASTRUCTURE: 5 FEET FROM POLICE/FIRE CALL BOX, EMERGENCY FACILITY, TRAFFIC CONTROL CABINETS, UTILITY BOX COVERS, MANHOLE COVERS, VALVE BOX COVERS, AND SIGN POLE
4. ROW ENCROACHMENTS: 4-5 FEET FROM ALL EXISTING ROW ENCROACHMENTS INCLUDING MAIL BOXES, LIGHT POLES, TRASH CANS, STREET FURNITURE.
5. PLANTER BEDS: ALL CORRALS SHALL HAVE A MINIMUM CLEARANCE OF 3 FEET FROM EXISTING PLANTER BEDS.
6. CORRAL INTERSECTION CLEARANCES ARE MEASURED AS FOLLOWS:
 - DIRECTIONAL RAMPS (10 FEET): MEASUREMENTS TAKEN FROM EDGE OF CURB RAMP TO EDGE OF CORRAL
 - DIAGONAL RAMPS (10 FEET): MEASUREMENTS TAKEN FROM CURB RETURN TANGENT POINTS TO EDGE OF CORRAL
 - DRIVEWAYS AND ALLEYS (5 FEET): MEASUREMENTS TAKEN FROM EDGE OF DRIVEWAY/ALLEY FLARE TO EDGE OF CORRAL
 - STOP BARS AND CROSSWALKS (5 FEET): MEASUREMENTS TAKEN FROM EDGE OF STOP BARS AND CROSSWALKS TO EDGE OF CORRAL

APPLICATION & APPROVAL PROCESS:



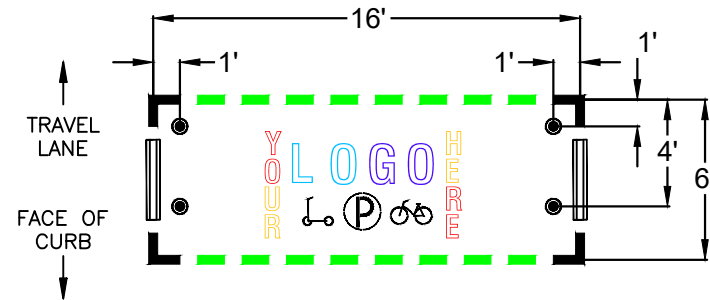
Date:		SHEET REVISIONS		DEPARTMENT OF TRANSPORTATION & INFRASTRUCTURE		MICROMOBILITY STANDARDS GENERAL NOTES	DRAFT
File Name: Micromobility Specs.dwg				201 WEST COLFAX AVENUE DENVER, CO 80202			
Horiz. Scale:	Vert. Scale: N/A			PHONE: (720) 913-4501 FAX: (720) 913-4544			
City Project Manager:				City & County of Denver			
						ISSUED BY:	SHEET NUMBER 1 OF 6

k: \P\WTRANDE\SHARED\03_P\WPD\CD\ProjectDevelopmentTeam\Engineers\Shaw\Other Projects\Micromobility Specs.dwg

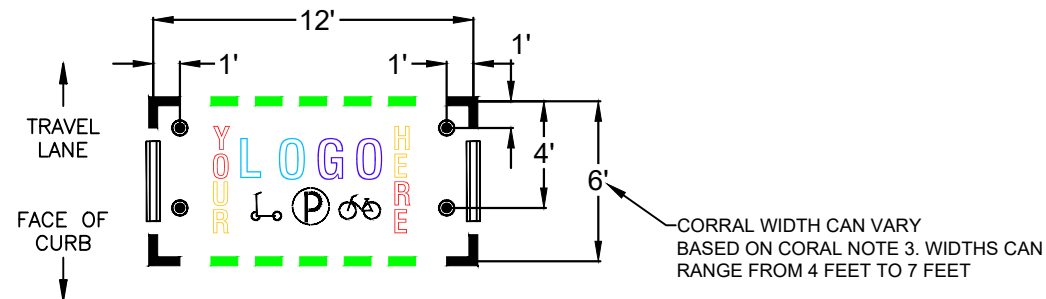
GENERAL DIMENSION AND CONFIGURATION OF
MICROMOBILITY CORRALS

CORRAL CONFIGURATION EXAMPLES:

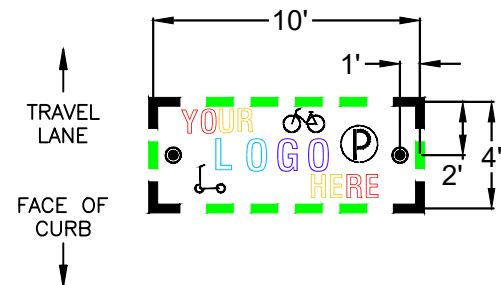
LARGE SIZE:



MEDIUM SIZE:



NARROW SIZE:



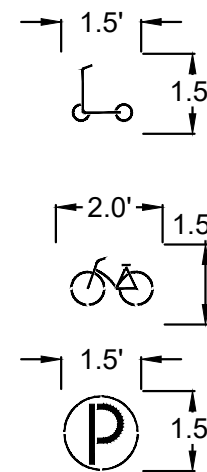
FLEX POST & RUBBER CURB NOTES:

1. ALL FLEX POSTS MOUNTED WITHIN CORRALS SHALL BE CONSISTENT WITH DOTI'S STANARD FLEX POSTS – 36" TALL WHITE FLEX POST WITH REFLECTIVE TAPE
2. SYMBOL: ●
3. FLEX POSTS SHALL BE PLACED AT LEAST 1 FOOT AWAY FROM CONCRETE GUTTER PAN.
4. FLEX POSTS SHALL BE INSTALLED USING HILTI SCREW BOLTS ($\frac{3}{8}$ " X 3 $\frac{1}{2}$ "), OR SIMILAR AS APPROVED BY DOTI
5. RUBBER CURBS SHOULD BE 4" TALL, AND PLACED ON ALL SIDES OF A CORRAL WHEN CORRALS ARE LOCATED BELOW THE CURB (EXCLUDING THE CURB SIDE OF THE CORRAL). RUBBER CURBS CAN BE CUT TO LENGTH TO FIT THE DETERMINED CORRAL DIMENSIONS

CORRAL NOTES:

1. WHEN CORRALS ARE PLACED BELOW THE CURB, FLEX POSTS AND RUBBER CURBS SHOULD BE INCLUDED IN THE DESIGN TO DISCOURAGE THE SPACES FROM BEING MISUSED BY VEHICLES.
2. FLEX POSTS AND RUBBER CURBS CAN BE EXCLUDED WHEN CORRALS ARE PLACED ABOVE THE CURB.
3. CORRAL DIMENSIONS CAN BE MODIFIED TO MEET THE CONSTRAINTS OF EACH SITE.
4. ANY FLEX POSTS, BIKE RACKS, OR OTHER VERTICAL ELEMENT OF A CORRAL SHALL BE A MINIMUM OF 1 FOOT INSIDE THE PERIMETER OF THE CORRAL
5. VENDOR LOGOS, AND PAVEMENT MARKINGS ARE PERMITTED WITHIN THE DETERMINED LIMITS OF EACH CORRAL.
6. EACH CORRAL SHOULD HAVE A SCOOTER, BIKE, AND PARKING MARKINGS TO EMPHASIZE THE INTENDED PURPOSE OF THE CORRAL.
7. ALL VERTICAL ELEMENTS WITHIN THE CORRAL SHALL BE APPROVED BY DOTI DURING THE REVIEW AND APPROVAL PROCESS.

SYMBOL STENCIL EXAMPLES:



Date:	
File Name: Micromobility Specs.dwg	
Horiz. Scale: Vert. Scale: N/A	
City Project Manager:	

SHEET REVISIONS	



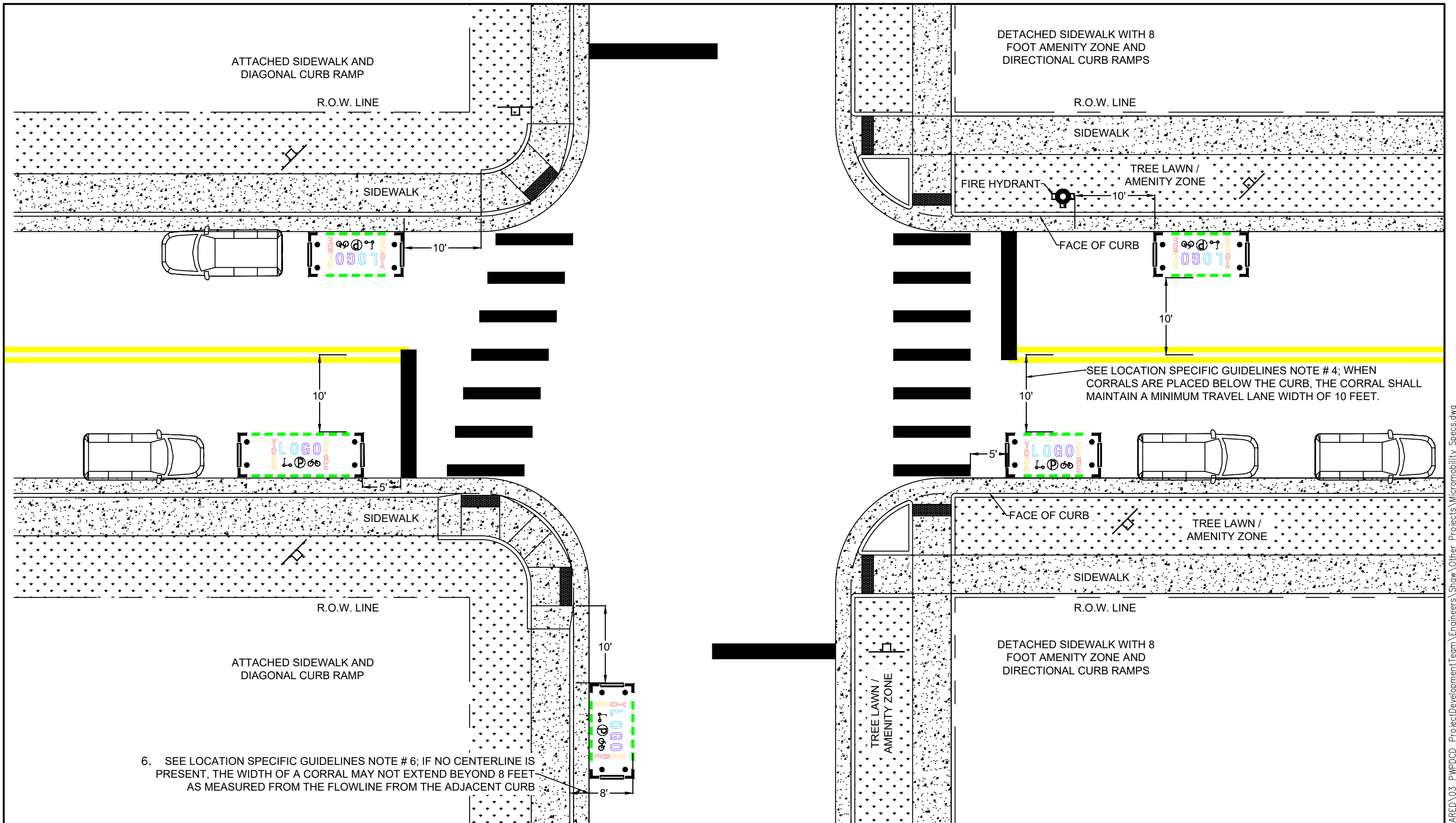
**DEPARTMENT OF
TRANSPORTATION & INFRASTRUCTURE**
 201 WEST COLFAX AVENUE
 DENVER, CO 80202
 PHONE: (720) 913-4501
 FAX: (720) 913-4544

**MICROMOBILITY STANDARDS
CORRAL DIMENSIONS AND
CONFIGURATIONS**

ISSUED BY: _____

DRAFT
SHEET NUMBER 2 OF 6

k:\P\WTRANDE\SHARED\03_PWPDCD_ProjectDevelopmentTeam\Engineers\Shaw\Other Projects\Micromobility Specs.dwg



Date:	
File Name: Micromobility Specs.dwg	
Horiz. Scale:	Vert. Scale: N/A
City Project Manager:	

SHEET REVISIONS	

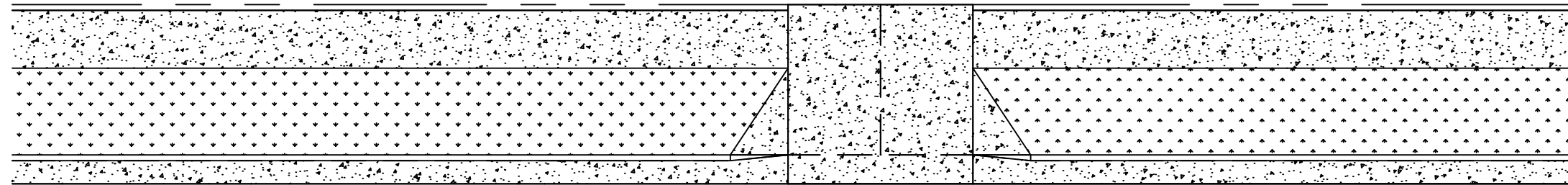


DEPARTMENT OF
 TRANSPORTATION & INFRASTRUCTURE
 201 WEST COLFAX AVENUE
 DENVER, CO 80202
 PHONE: (720) 913-4501
 FAX: (720) 913-4544

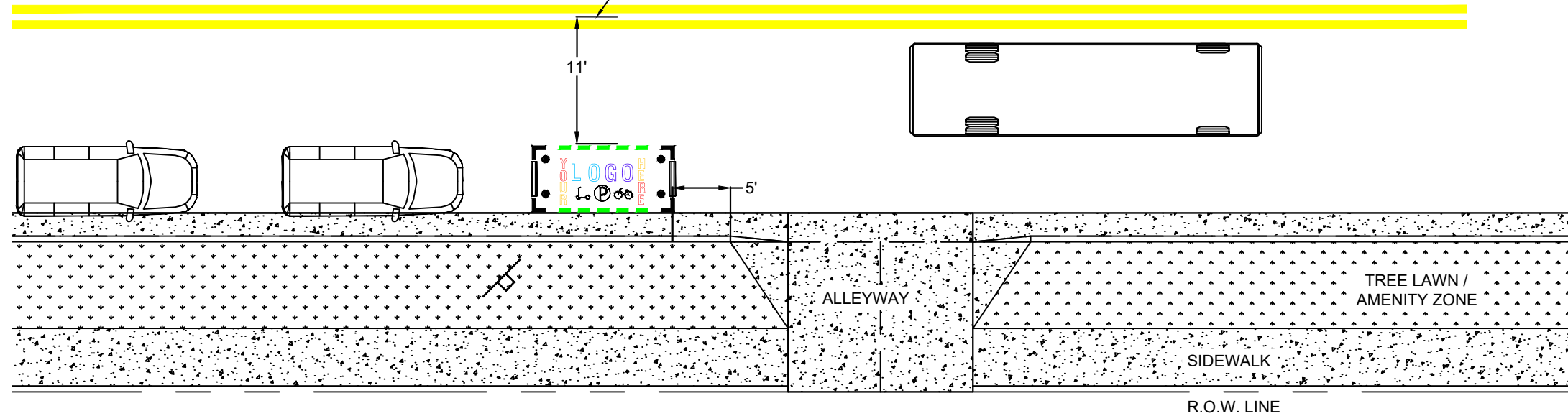
MICROMOBILITY STANDARDS
 COLLECTOR ST INTERSECTION WITH
 PARALLEL PARKING
 ISSUED BY:

DRAFT
 SHEET NUMBER 3 OF 6

k:\P\WTRANDE\SHARED\03_PWPDCD\ProjectDevelopmentTeam\Engineers\Shaw\Other Projects\Micromobility Specs.dwg



PER LOCATION SPECIFIC GUIDELINES NOTE 5.; THE MINIMUM WIDTH OF THE ADJ. LANE MUST BE 11 FEET ALONG BUS ROUTES.



Date:	
File Name: Micromobility Specs.dwg	
Horiz. Scale:	Vert. Scale: N/A
City Project Manager:	

SHEET REVISIONS	



City & County of Denver

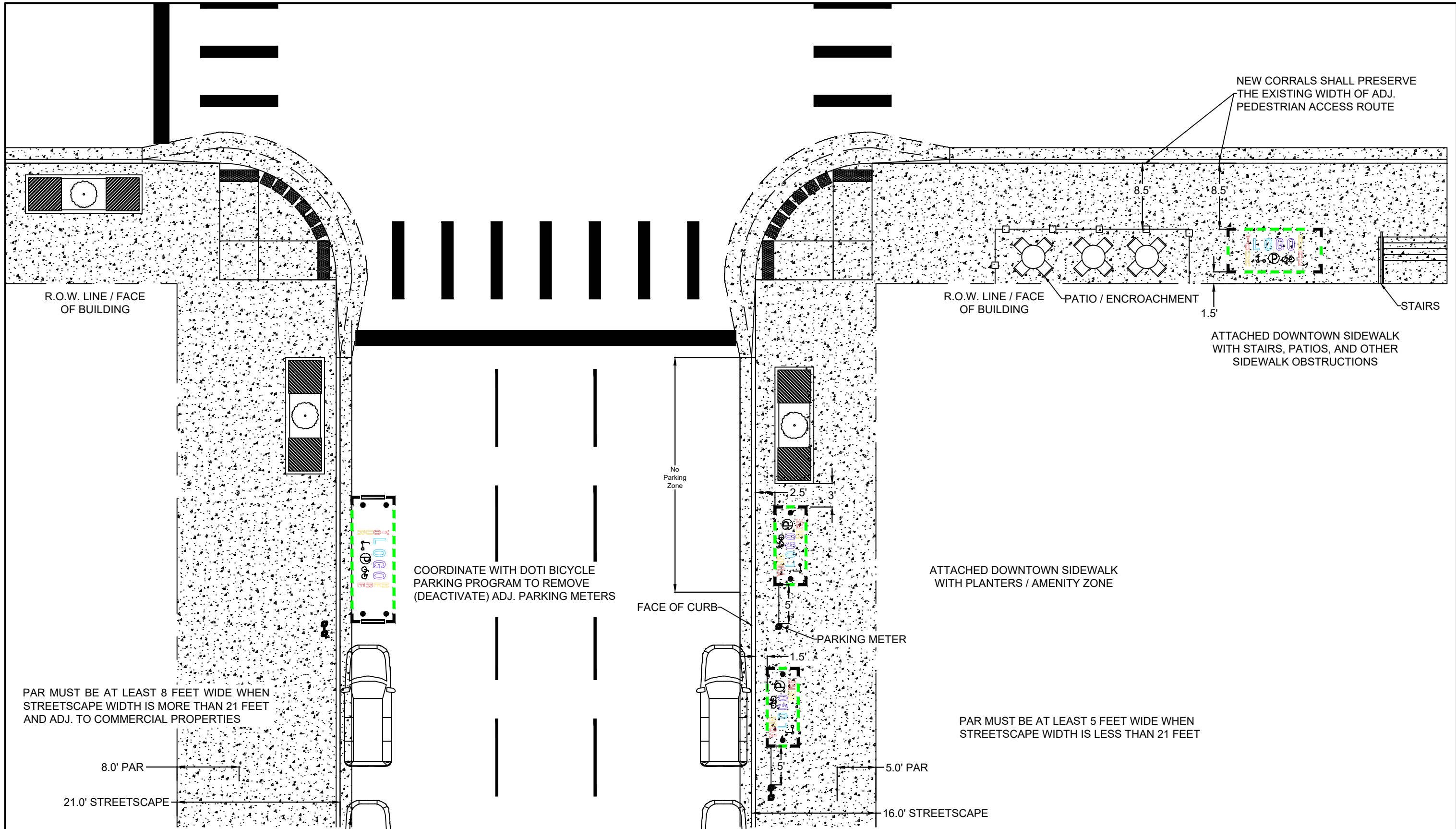
DEPARTMENT OF TRANSPORTATION & INFRASTRUCTURE
 201 WEST COLFAX AVENUE
 DENVER, CO 80202
 PHONE: (720) 913-4501
 FAX: (720) 913-4544

MICROMOBILITY STANDARDS
 COLLECTOR ST & ALLEY INTERSECTION WITH
 PARALLEL PARKING – RTD BUS ROUTE

ISSUED BY:

DRAFT
SHEET NUMBER 4 OF 6

k:\P\WIRANDE\SHARED\03_PWPDCD_ProjectDevelopmentTeam\Engineers\Shaw\Other Projects\Micromobility Specs.dwg



Date:
 File Name: Micromobility Specs.dwg
 Horiz. Scale: Vert. Scale: N/A
 City Project Manager:

SHEET REVISIONS	


 City & County
 of Denver

**DEPARTMENT OF
 TRANSPORTATION & INFRASTRUCTURE**
 201 WEST COLFAX AVENUE
 DENVER, CO 80202
 PHONE: (720) 913-4501
 FAX: (720) 913-4544

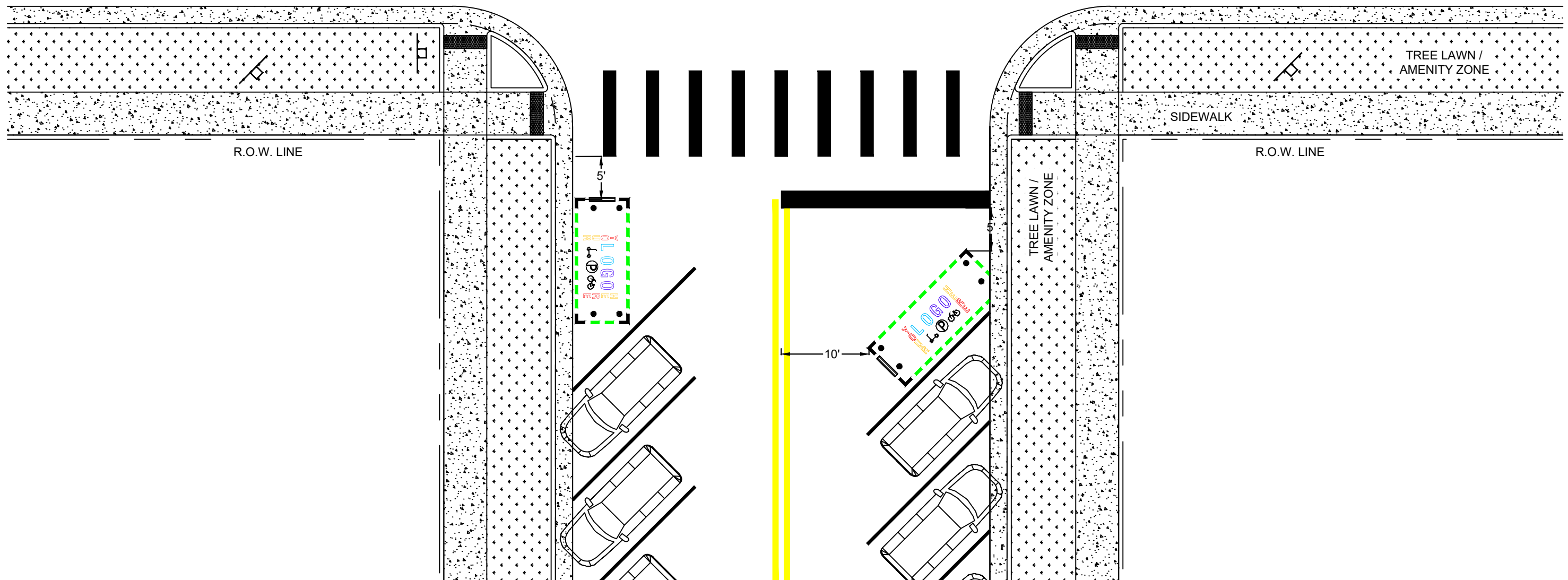
**MICROMOBILITY STANDARDS
 DOWNTOWN STREET WITH TRAFFIC
 SIGNAL AND PARALLEL PARKING**

ISSUED BY:

DRAFT

SHEET NUMBER 5 OF 6

k:\P\WIRANDE\SHARED\03_PWPDCD\ProjectDevelopmentTeam\Engineers\Shaw\Other Projects\Micromobility Specs.dwg



Date:	
File Name: Micromobility Specs.dwg	
Horiz. Scale:	Vert. Scale: N/A
City Project Manager:	

SHEET REVISIONS	



DEPARTMENT OF
 TRANSPORTATION & INFRASTRUCTURE
 201 WEST COLFAX AVENUE
 DENVER, CO 80202
 PHONE: (720) 913-4501
 FAX: (720) 913-4544

MICROMOBILITY STANDARDS
 COLLECTOR STREET WITH DIAGONAL PARKING
 ISSUED BY:

DRAFT
 SHEET NUMBER 6 OF 6

K:\P\WTRANDE\SHARED\03_PWPDCD_ProjectDevelopmentTeam\Engineers\Shaw\Other Projects\Micromobility Specs.dwg